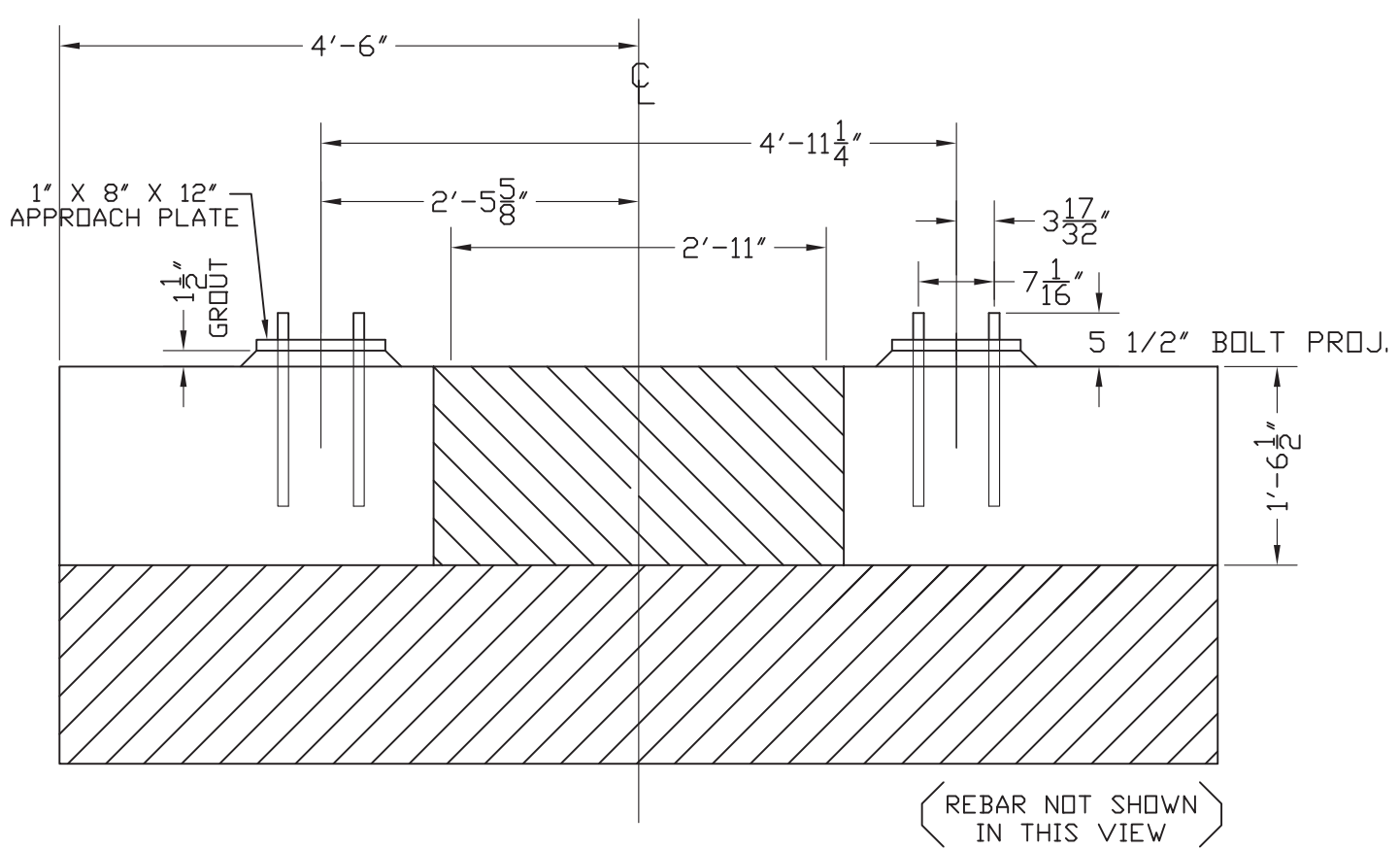


- GENERAL NOTES:
- THIS SCALE IS DESIGNED AND MANUFACTURED IN ACCORDANCE WITH REGULATIONS ESTABLISHED BY THE AMERICAN ASSOCIATION OF RAILROADS "AAR" AND THE NATIONAL INSTITUTE OF STANDARDS AND TECHNOLOGY "NIST".
 - THE SCALE IS DESIGNED TO ACCEPT A 115 LB. AREA RAIL, AS REQUIRED AS MINIMUM BY AAR. THE APPROACH RAILS AND SCALE WEIGH RAIL SHOULD BE THE SAME WEIGHT. ALL RAILS ARE TO BE SUPPLIED BY THE CUSTOMER.
 - THE APPROACH ANCHOR BOLTS, APPROACH RAIL PLATES, RAIL CLIPS AND ANTI-CREEP DEVICES ARE ALL SUPPLEMENTAL ITEMS. THE QUANTITIES REQUIRED WILL VARY DEPENDING ON SCALE SIZE, APPROACH LENGTHS AND MODULE SPACING. THEY CAN BE SUPPLIED BY FAIRBANKS SCALES WHEN ORDERED AS ACCESSORIES.
 - RAILS SHOULD BE MITER CUT AT THE ENDS OF WEIGHRAILS AND APPROACH RAILS TO ASSURE SMOOTH TRANSFER OF WHEELS IN ORDER TO REDUCE IMPACT LOADING (SEE RAIL CUT DETAIL).
 - AAR SCALE SPECIFICATIONS STATE THAT THE RAIL ON THE APPROACH, BEAD SPACE, AND WEIGHBRIDGE SHALL BE PROPERLY ANCHORED TO PREVENT CREEPING OF RAILS. THIS IS DONE IN ORDER TO MAINTAIN THE PROPER GAP BETWEEN THE WEIGHRAIL AND THE APPROACH RAIL. TO INSTALL ANTI-CREEP ASSEMBLIES AND THE WEB OF THE RAILS MUST BE DRILLED TO ACCEPT ANCHORING BOLTS.
 - THE LOAD CELL BASE PLATES ARE THE FOUNDATION UPON WHICH THE SCALE STRUCTURE REST, AND THEIR LEVEL, ACCURATE POSITION IS BASIC TO THE ENTIRE INSTALLATION. WORK FROM A CENTERLINE COMMON TO BOTH SCALE UNITS. INSTALL BASE PLATES LEVEL TO WITHIN 0.01" IN 1' AND IN THE PLANE AS INDICATED WITHIN 1/16". USE THE MACHINED SURFACE OF THE LOAD CELL BASE PLATE AS THE REFERENCE PLANE.
 - THE GROUT UNDER THE BASE PLATES MUST BE A NON-SHRINK, NON-METALLIC GROUT SUCH AS SEALTIGHT ND 588 AS MANUFACTURED BY W.R. MEADOWS INC. OR EQUAL MIX FOR MINIMUM FLOW (PLASTIC) AND FURKE GROUT UNDER ENTIRE AREA OF BASE PLATES BY RODDING ALLOW 3 DAYS FOR GROUT TO CURE BEFORE HEAVY TRAFFIC IS ALLOWED ON SCALE.
 - PER AAR REQUIREMENTS, ALL RAILS SHALL BE ANCHORED TO PREVENT THE APPROACH RAILS AND WEIGH RAILS FROM CREEPING. THIS REQUIREMENT IS IN ORDER TO MAINTAIN THE PROPER GAP BETWEEN THE RAILS. ANTI-CREEP WELDMENTS ARE AVAILABLE FROM FAIRBANKS SCALES AS A SUPPLEMENTAL ACCESSORY.

PARTS IDENTIFICATION LIST			
ITEM #	QNTY	SYM #	DESCRIPTION
1	2	72681	WEIGHBRIDGE ASSEMBLY (SINGLE)
2	8	72661	GROUT PLATE 1 1/2" x 20" x 21" (ENDS)
3	8	72689	APPROACH COLUMN
4	32	54664	HEX BOLT 1"-8 x 2 1/2"
5	32	54782	1" LOCK WASHER
6	8	72139	LOADCELL 100K, LCF-HR4020-4A, NTEP CoC #97078
7	8	72662	LOWER RECIEVER PLATE W/ BEARING 1" THICK, HARDENED RC 50-55
8	16	73972	CLAMP PLATE
9	32	54532	HEX BOLT 3/4"-10 x 3"
10	32	54776	LOCK WASHER 3/4"
11	8	72663	UPPER RECIEVER PLATE
12	32	54555	HEX BOLT 3/4"-10 x 3 1/2"
13	32	54233	FLAT WASHER 3/4"
14	32	54776	LOCK WASHER 3/4"
15	32	54264	HEX NUT 3/4"
16	8	70508	UPPER BEARING 1" THICK, HARDENED RC 50-55
17	4	72674	CHECK BRACKET RH
18	4	72673	CHECK BRACKET LH
19	32	74023	HEX BOLT 1 1/8" x 4"
20	32	54255	FLAT WASHER 1 1/8"
21	32	54788	LOCK WASHER 1 1/8"
22	32	54304	HEX BOLT 1 1/8"
23	8	74003	BUMPER PLATE
24	16	74009	BUMPER SHIM PLATE 1/16"
25	16	74007	BUMPER SHIM PLATE 1/8"
26	16	74005	BUMPER SHIM PLATE 1/4"
27	16	74024	HEX BOLT 3/4"-16 x 3"
28	16	54776	LOCK WASHER 3/4"
29	8	72668	ANTI CREEP WELDMENT FOR WEIGHBRIDGE (SEE NOTE 8)
30	80	62146	ANTI CREEP SPACE (SEE NOTE 8)
31	32	54435	HEX BOLT 1" x 4 1/4" W/ NUT (SEE NOTE 8)
32	16	62145	ANTI CREEP WELDMENT FOR APPROACH (SEE NOTE 8)



FAIRBANKS SCALES			
Meridian, Mississippi			
MODEL 2000, LOW PROFILE RAILROAD SCALE			
12'-6" AND 12'-6" COMBINATION			
4/12/00			
N/A			
SB			
SETTING PLAN			
D91648-SP			
REV	BY	DATE	DESCRIPTION
A	SB	7/20	ADDED DETAILS
B	SB	11/03	REV. NOTES
C	SB	11/03	REV. LVP GAP AND ENLARGED DETAIL "A"
The material and information contained herein is confidential and is the property of Fairbanks Scales and is not to be used, disclosed, copied, transferred or reproduced without the prior written permission of Fairbanks.			
Unless otherwise specified dimensions are in inches.			
Tolerances: Fractions: 1/8" - 1/4" 1/16"			
Decimals: 1/1000"			
3 place decimals			
2 place decimals			
Note revision 11/20			
MATERIAL	FINISH	checked by	approved by